

LAND NORTH AND WEST OF HETHERSETT, NORFOLK

STRATEGIC LANDSCAPE AND VISUAL APPRAISAL

Figure 6

November 2018

Figure 6 Photographic Sheets (1 to 16)



Photo Location 1: View looking west from PRoW Great Melton FP4 (internally across the Site)



Photo Location 2: View looking north from PRoW Great Melton FP4 (internally across the Site)



Photo Location 3: View looking east from PRoW Great Melton FP4 (internally across the Site)



Photo Location 4: View looking south from PRoW Great Melton FP4 (internally across the Site)



Photo Location 5: View looking east from PRoW Great Melton FP4 (towards the Site)



Photo Location 6: View looking east from PRoW Great Melton FP4 (towards the Site)



Photo Location 7: View looking east from PRoW (towards the Site)



Photo Location 8: View looking east from PRoW (towards the Site)



Photo Location 9: View looking east from PRoW Great Melton FP3 (towards the Site)



Photo Location 10: View looking east from PRoW Great Melton FP3 (towards the Site)



Photo Location 11: View looking southeast from PRoW Great Melton FP3 (towards the Site)



Photo Location 12: View looking southeast from PRoW Great Melton FP3 (towards the Site)



Photo Location 13: View looking east from PRoW Great Melton FP4 (towards the Site)



Photo Location 14: View looking southeast from PRoW Great Melton FP4 (towards the Site)

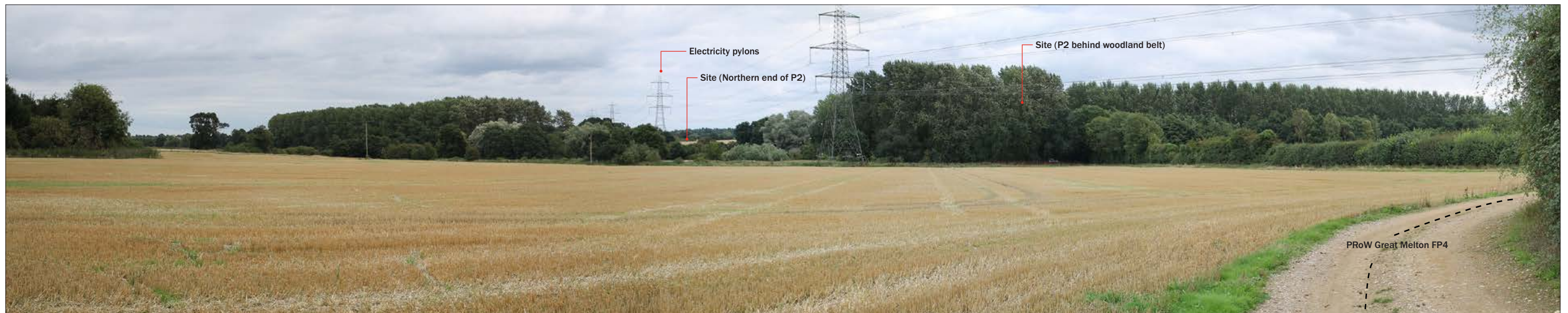


Photo Location 15: View looking east from PRoW Great Melton FP4 (towards the Site)



Photo Location 16: View looking north from PRoW (away from the Site)



Photo Location 17: View looking southeast from PRoW towards the B1172



Photo Location 18: View looking north from a permissive path adjacent to the B1172 (towards the Site)



Photo Location 19: View looking north from a permissive path (towards the Site)



Photo Location 20: View looking northeast from a permissive path (towards the Site)



Photo Location 21: View looking northeast from a permissive path (towards the Site)



Photo Location 22: View looking east from PRoW Wymondham RP26 (away from the Site)



Photo Location 23: View looking east from High Green (towards the Site)



Photo Location 24: View looking east from High Green (towards the Site)



Photo Location 25: View looking east from the War Memorial on Market Lane (towards the Site)



Photo Location 26: View looking southeast from Church of All Saints off Market Lane (towards the Site)



Photo Location 27: View looking southeast from Market Lane (towards the Site)



Photo Location 28: View looking south from Market Lane (towards the Site)



Photo Location 29: View looking south from Market Lane (towards the Site)



Photo Location 30: View looking south from Bawburgh Hill (towards the Site)



Photo Location 31: View looking south from PRoW Bawburgh Hill FP2 (towards the Site)



Photo Location 32: View looking east from Little Melton Road (towards the Site)

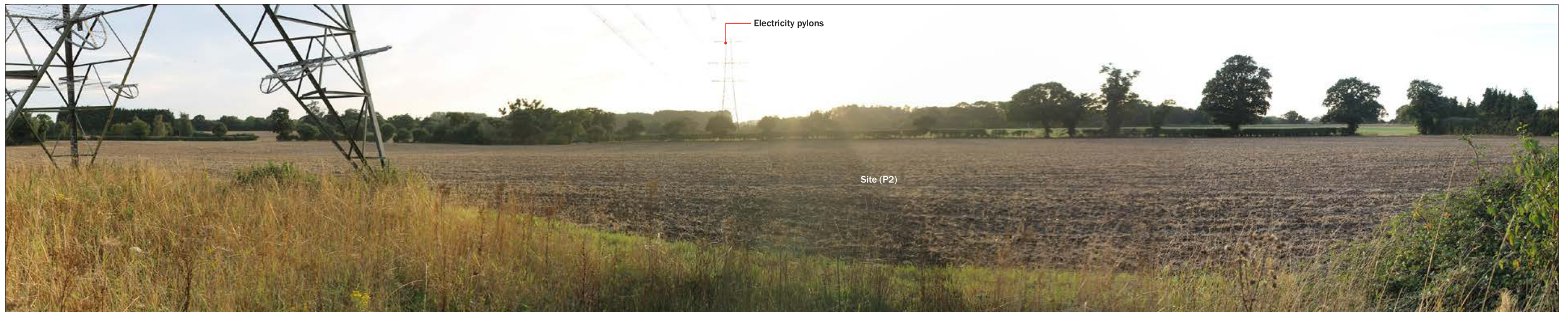


Photo Location 33: View looking west from Little Melton Road (towards the Site)



Photo Location 34: View looking east from PRoW Little Melton FP2 (towards the Site)



Photo Location 35: View looking southeast from Little Melton Road (towards the Site)



Photo Location 36: View looking southeast from Little Melton Road (towards the Site)



Photo Location 37: View looking southwest from Burnthouse Lane (looking towards the Site)



Photo Location 38: View looking southwest from Burnthouse Lane (looking towards the Site)



Photo Location 39: View looking west from Burnthouse Lane (looking towards the Site)

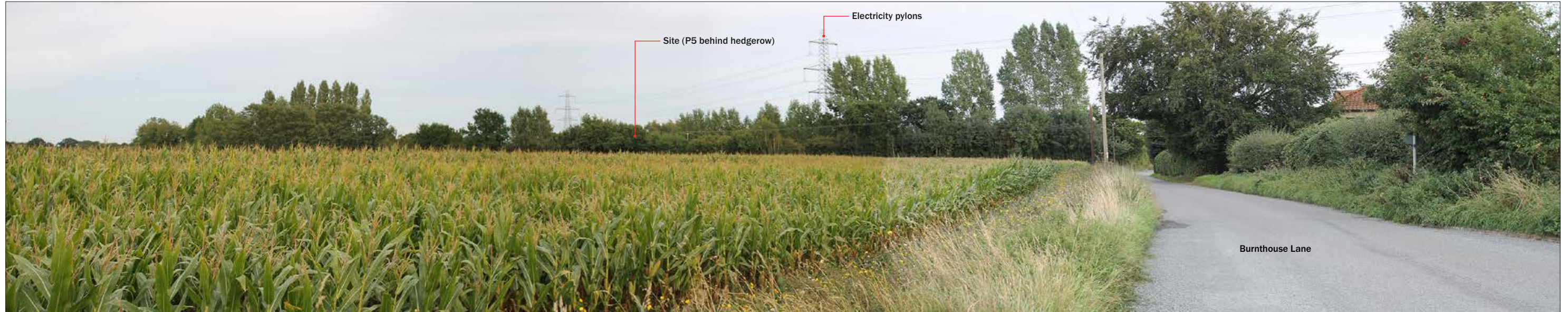


Photo Location 40: View looking southwest from Burnthouse Lane (looking towards the Site)



Photo Location 41: View looking west from Burnthouse Lane (looking towards the Site)



Photo Location 42: View looking south east from Burnthouse Lane (towards the Site)



Photo Location 43: View looking north from Burnthouse Lane (Towards the Site)



Photo Location 44: View looking north west from Burnthouse Lane (away from the Site)



Photo Location 45: View looking north west from Colney Lane (towards the Site)

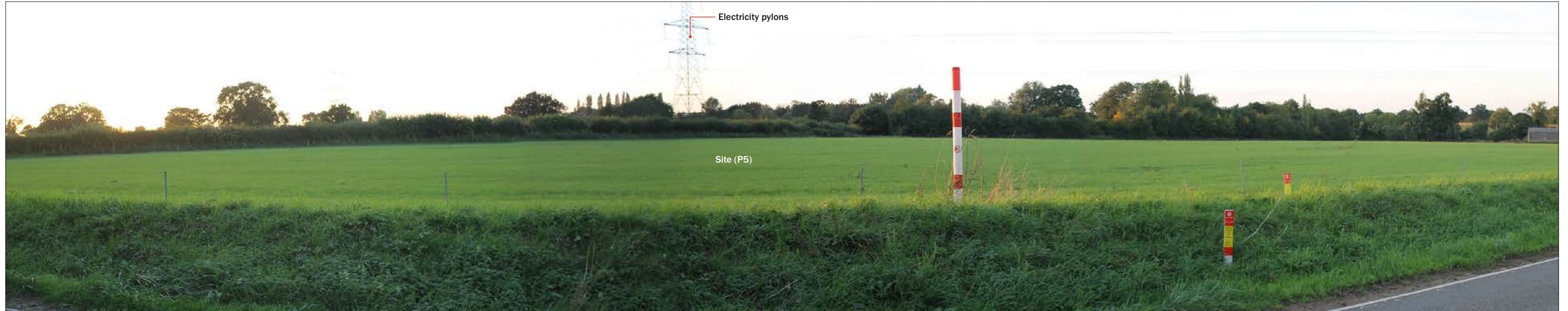


Photo Location 46: View looking north west from Colney Lane (towards the Site)



Photo Location 47: View looking south west from Braymeadow Lane (towards the Site)

Stansted:
Unit 1, The Exchange,
9 Station Road,
Stansted, CM24 8BE

t +44 (0)1279 647044
e office@lizlake.com
www.lizlake.com

Bristol:
1 Host Street,
Bristol, BS1 5BU

t +44 (0)117 927 1786
e office@lizlake.com
www.lizlake.com

Nottingham:
3 Newcastle Chambers
Angel Row
Nottingham
NG1 6HL
t +44 (0)115 784 3566
e office@lizlake.com
www.lizlake.com

LIZ LAKE
ASSOCIATES
LANDSCAPE ARCHITECTS

- Landscape Design
- Urban Design
- Residential
- Public Realm
- Masterplanning
- Landscape Planning
- Heritage Landscapes
- Gardens and Estates
- Restoration and Conversion
- Places of Worship
- Expert Witness
- Hospitality
- Education
- Retail / Office
- Community
- Ecology
- Arboriculture
- 3D / Graphic Design