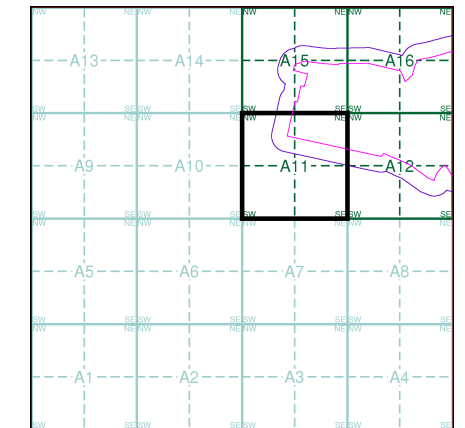


- General**
- Specified Site
 - Specified Buffer(s)
 - Bearing Reference Point
 - Map ID
 - Several of Type at Location
 - Pylon
 - Overhead Transmission Line
- Agency and Hydrological**
- Contaminated Land Register Entry or Notice (Location)
 - Contaminated Land Register Entry or Notice
 - Discharge Consent
 - Enforcement or Prohibition Notice
 - Integrated Pollution Control
 - Integrated Pollution Prevention Control
 - Local Authority Integrated Pollution Prevention and Control
 - Local Authority Pollution Prevention and Control Enforcement
 - Pollution Incident to Controlled Waters
 - Prosecution Relating to Authorised Processes
 - Prosecution Relating to Controlled Waters
 - Registered Radioactive Substance
 - River Network or Water Feature
 - River Quality Sampling Point
 - Substantiated Pollution Incident Register
 - Water Abstraction
 - Water Industry Act Referral
- Waste**
- BGS Recorded Landfill Site (Location)
 - BGS Recorded Landfill Site
 - EA Historic Landfill (Buffered Point)
 - EA Historic Landfill (Polygon)
 - Integrated Pollution Control Registered Waste Site
 - Licensed Waste Management Facility (Landfill Boundary)
 - Licensed Waste Management Facility (Location)
 - Local Authority Recorded Landfill Site (Location)
 - Local Authority Recorded Landfill Site
 - Potentially Infilled Land (Non-water)
 - Potentially Infilled Land (Non-water)
 - Potentially Infilled Land (Non-water)
 - Potentially Infilled Land (Water)
 - Potentially Infilled Land (Water)
 - Potentially Infilled Land (Water)
 - Registered Landfill Site
 - Registered Landfill Site (Location)
 - Registered Landfill Site (Point Buffered to 100m)
 - Registered Landfill Site (Point Buffered to 250m)
 - Registered Waste Transfer Site (Location)
 - Registered Waste Transfer Site
 - Registered Waste Treatment or Disposal Site (Location)
 - Registered Waste Treatment or Disposal Site
- Hazardous Substances**
- COMAH Site
 - Explosive Site
 - NIHHS Site
 - Planning Hazardous Substance Consent
 - Planning Hazardous Substance Enforcement
- Geological**
- BGS Recorded Mineral Site

Site Sensitivity Map - Segment A11

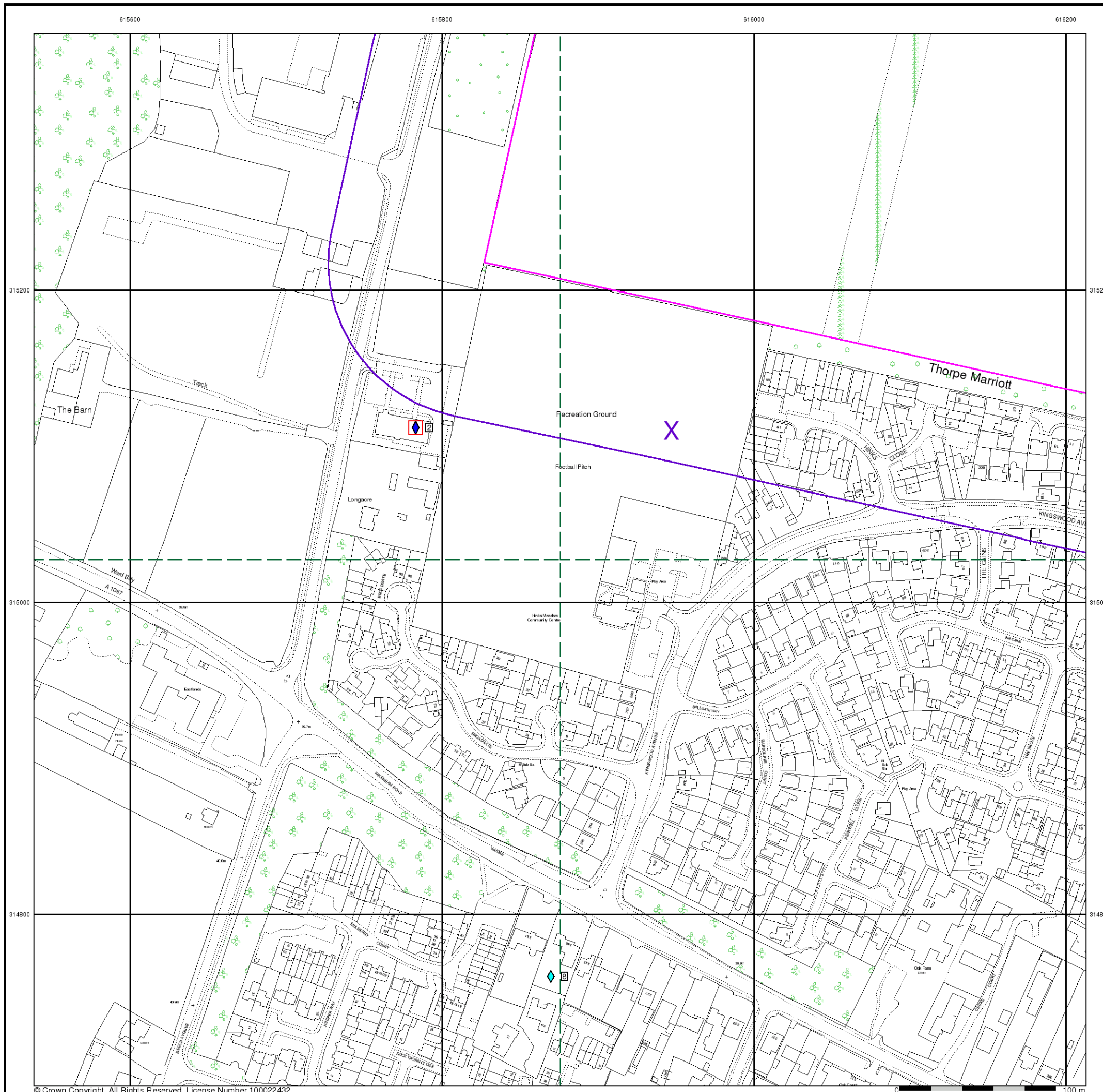


Order Details

Order Number: 186667864_1_1
 Customer Ref: 3551_EC,AR,DS
 National Grid Reference: 615950, 315110
 Slice: A
 Site Area (Ha): 79.31
 Plot Buffer (m): 100

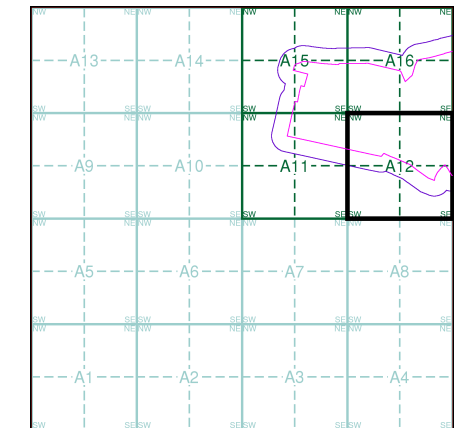
Site Details

Marriotts Park, Taverham, Norfolk, NR8 6HL



- General**
- Specified Site
 - Specified Buffer(s)
 - Bearing Reference Point
 - Map ID
 - Several of Type at Location
 - Pylon
 - Overhead Transmission Line
- Agency and Hydrological**
- Contaminated Land Register Entry or Notice (Location)
 - Contaminated Land Register Entry or Notice
 - Discharge Consent
 - Enforcement or Prohibition Notice
 - Integrated Pollution Control
 - Integrated Pollution Prevention Control
 - Local Authority Integrated Pollution Prevention and Control
 - Local Authority Pollution Prevention and Control Enforcement
 - Pollution Incident to Controlled Waters
 - Prosecution Relating to Authorised Processes
 - Prosecution Relating to Controlled Waters
 - Registered Radioactive Substance
 - River Network or Water Feature
 - River Quality Sampling Point
 - Substantiated Pollution Incident Register
 - Water Abstraction
 - Water Industry Act Referral
- Waste**
- BGS Recorded Landfill Site (Location)
 - BGS Recorded Landfill Site
 - EA Historic Landfill (Buffered Point)
 - EA Historic Landfill (Polygon)
 - Integrated Pollution Control Registered Waste Site
 - Licensed Waste Management Facility (Landfill Boundary)
 - Licensed Waste Management Facility (Location)
 - Local Authority Recorded Landfill Site (Location)
 - Local Authority Recorded Landfill Site
 - Potentially Infilled Land (Non-water)
 - Potentially Infilled Land (Non-water)
 - Potentially Infilled Land (Non-water)
 - Potentially Infilled Land (Water)
 - Potentially Infilled Land (Water)
 - Potentially Infilled Land (Water)
 - Registered Landfill Site
 - Registered Landfill Site (Location)
 - Registered Landfill Site (Point Buffered to 100m)
 - Registered Landfill Site (Point Buffered to 250m)
 - Registered Waste Transfer Site (Location)
 - Registered Waste Transfer Site
 - Registered Waste Treatment or Disposal Site (Location)
 - Registered Waste Treatment or Disposal Site
- Hazardous Substances**
- COMAH Site
 - Explosive Site
 - NIHHS Site
 - Planning Hazardous Substance Consent
 - Planning Hazardous Substance Enforcement
- Geological**
- BGS Recorded Mineral Site

Site Sensitivity Map - Segment A12

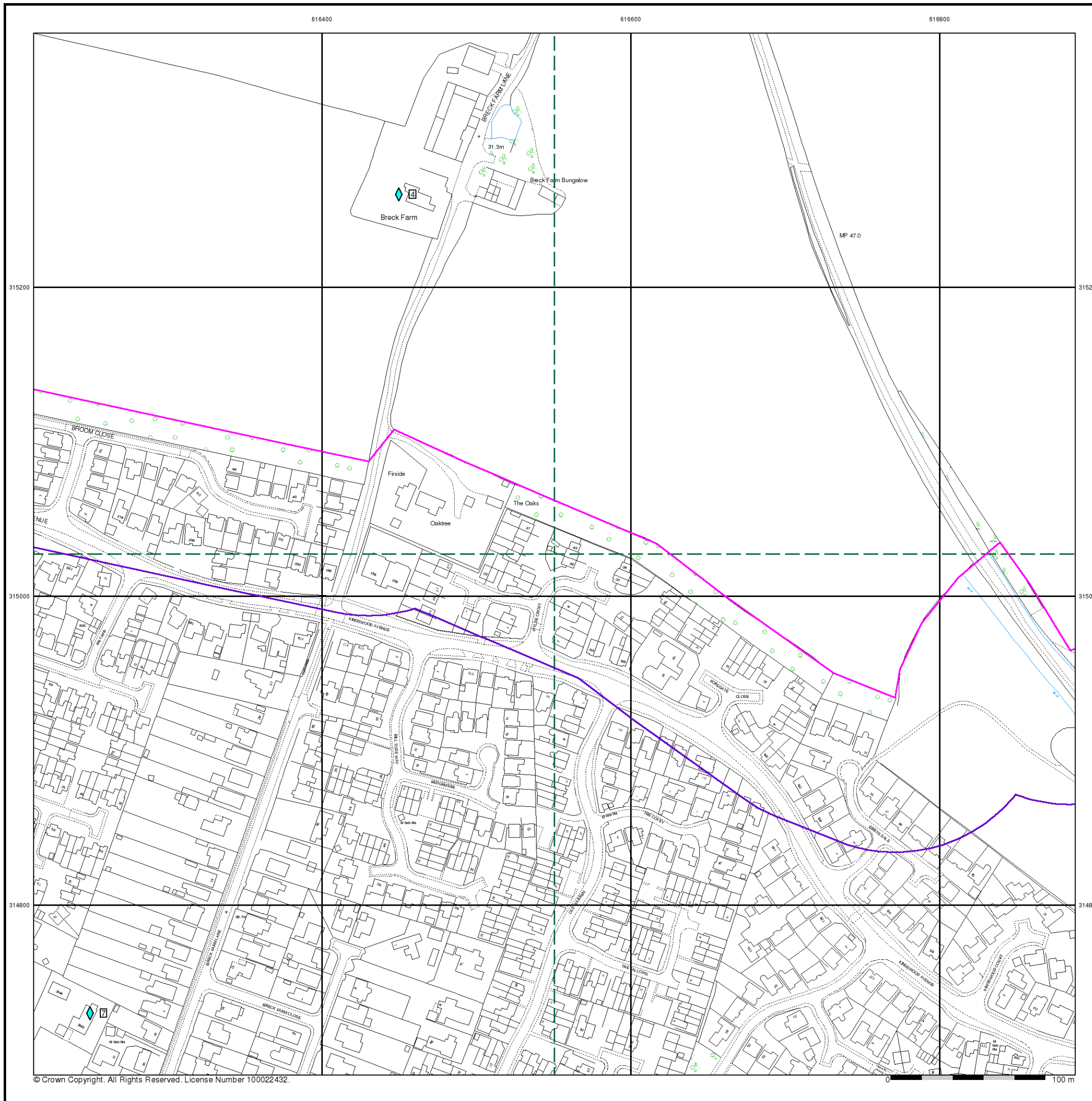


Order Details

Order Number: 186667864_1_1
 Customer Ref: 3551_EC,AR,DS
 National Grid Reference: 615950, 315110
 Slice: A
 Site Area (Ha): 79.31
 Plot Buffer (m): 100

Site Details

Marriotts Park, Taverham, Norfolk, NR8 6HL



General

- Specified Site
- Specified Buffer(s)
- Bearing Reference Point
- Map ID
- Several of Type at Location
- Pylon
- Overhead Transmission Line

Agency and Hydrological

- Contaminated Land Register Entry or Notice (Location)
- Contaminated Land Register Entry or Notice
- Discharge Consent
- Enforcement or Prohibition Notice
- Integrated Pollution Control
- Integrated Pollution Prevention Control
- Local Authority Integrated Pollution Prevention and Control
- Local Authority Pollution Prevention and Control Enforcement
- Pollution Incident to Controlled Waters
- Prosecution Relating to Authorised Processes
- Prosecution Relating to Controlled Waters
- Registered Radioactive Substance
- River Network or Water Feature
- River Quality Sampling Point
- Substantiated Pollution Incident Register
- Water Abstraction
- Water Industry Act Referral

Waste

- BGS Recorded Landfill Site (Location)
- BGS Recorded Landfill Site
- EA Historic Landfill (Buffered Point)
- EA Historic Landfill (Polygon)
- Integrated Pollution Control Registered Waste Site
- Licensed Waste Management Facility (Landfill Boundary)
- Licensed Waste Management Facility (Location)
- Local Authority Recorded Landfill Site (Location)
- Local Authority Recorded Landfill Site
- Potentially Infilled Land (Non-water)
- Potentially Infilled Land (Non-water)
- Potentially Infilled Land (Non-water)
- Potentially Infilled Land (Water)
- Potentially Infilled Land (Water)
- Potentially Infilled Land (Water)
- Registered Landfill Site
- Registered Landfill Site (Location)
- Registered Landfill Site (Point Buffered to 100m)
- Registered Landfill Site (Point Buffered to 250m)
- Registered Waste Transfer Site (Location)
- Registered Waste Transfer Site
- Registered Waste Treatment or Disposal Site (Location)
- Registered Waste Treatment or Disposal Site

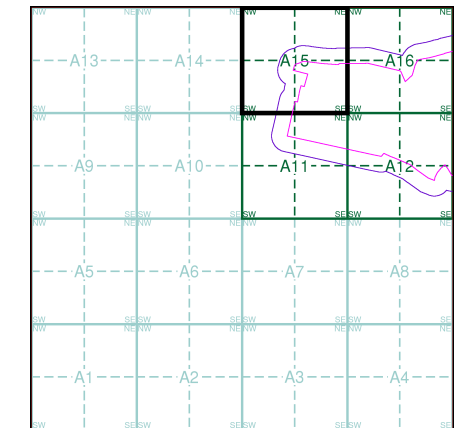
Hazardous Substances

- COMAH Site
- Explosive Site
- NIHHS Site
- Planning Hazardous Substance Consent
- Planning Hazardous Substance Enforcement

Geological

- BGS Recorded Mineral Site

Site Sensitivity Map - Segment A15

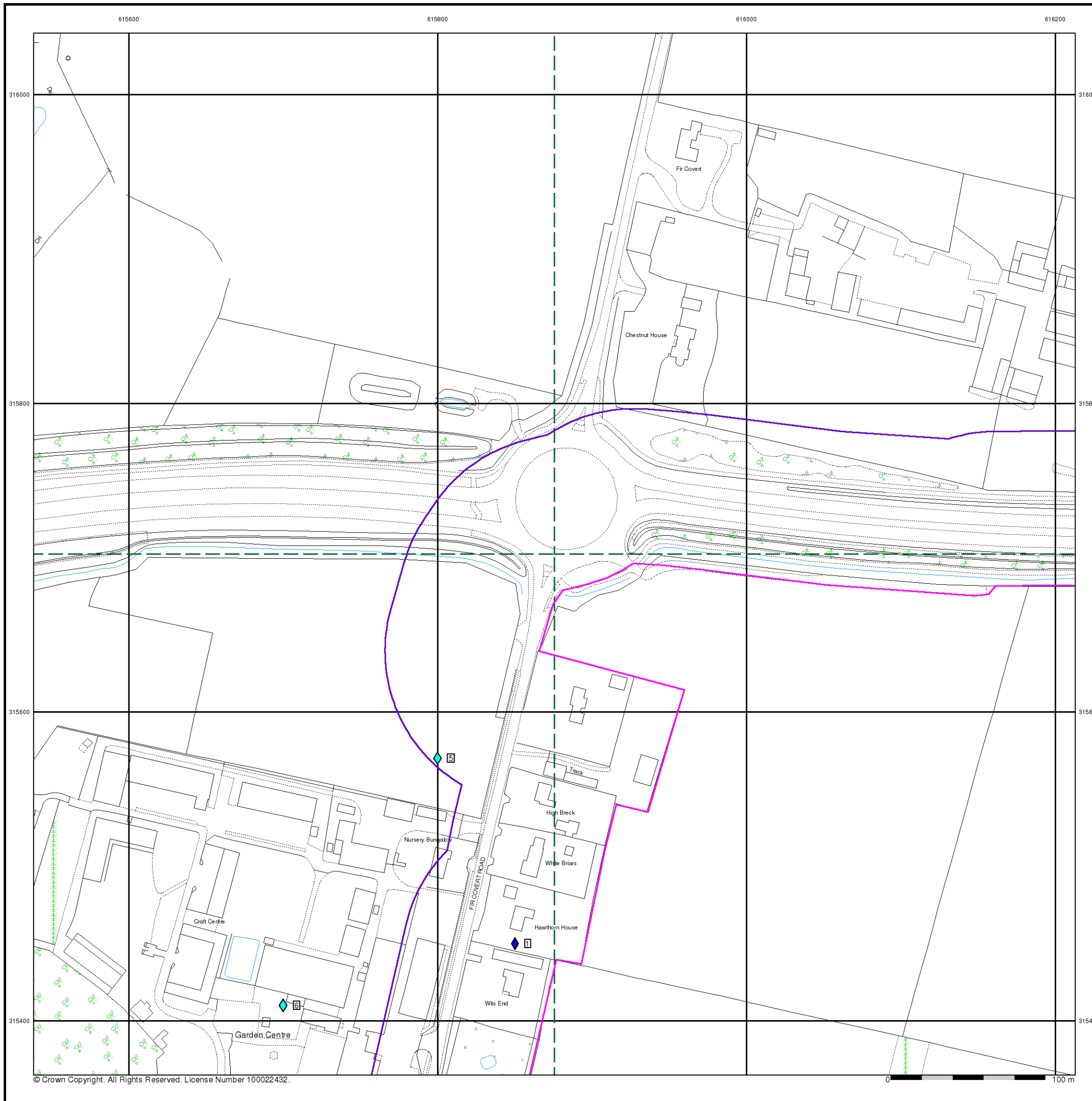


Order Details

Order Number: 186667864_1_1
 Customer Ref: 3551_EC,AR,DS
 National Grid Reference: 615950, 315110
 Slice: A
 Site Area (Ha): 79.31
 Plot Buffer (m): 100

Site Details

Marriotts Park, Taverham, Norfolk, NR8 6HL



General

- Specified Site
- Specified Buffer(s)
- Bearing Reference Point
- Map ID
- Several of Type at Location
- Pylon
- Overhead Transmission Line

Agency and Hydrological

- Contaminated Land Register Entry or Notice (Location)
- Contaminated Land Register Entry or Notice
- Discharge Consent
- Enforcement or Prohibition Notice
- Integrated Pollution Control
- Integrated Pollution Prevention Control
- Local Authority Integrated Pollution Prevention and Control
- Local Authority Pollution Prevention and Control Enforcement
- Pollution Incident to Controlled Waters
- Prosecution Relating to Authorised Processes
- Prosecution Relating to Controlled Waters
- Registered Radioactive Substance
- River Network or Water Feature
- River Quality Sampling Point
- Substantiated Pollution Incident Register
- Water Abstraction
- Water Industry Act Referral

Waste

- BGS Recorded Landfill Site (Location)
- BGS Recorded Landfill Site
- EA Historic Landfill (Buffered Point)
- EA Historic Landfill (Polygon)
- Integrated Pollution Control Registered Waste Site
- Licensed Waste Management Facility (Landfill Boundary)
- Licensed Waste Management Facility (Location)
- Local Authority Recorded Landfill Site (Location)
- Local Authority Recorded Landfill Site
- Potentially Infilled Land (Non-water)
- Potentially Infilled Land (Non-water)
- Potentially Infilled Land (Non-water)
- Potentially Infilled Land (Water)
- Potentially Infilled Land (Water)
- Potentially Infilled Land (Water)
- Registered Landfill Site
- Registered Landfill Site (Location)
- Registered Landfill Site (Point Buffered to 100m)
- Registered Landfill Site (Point Buffered to 250m)
- Registered Waste Transfer Site (Location)
- Registered Waste Transfer Site
- Registered Waste Treatment or Disposal Site (Location)
- Registered Waste Treatment or Disposal Site

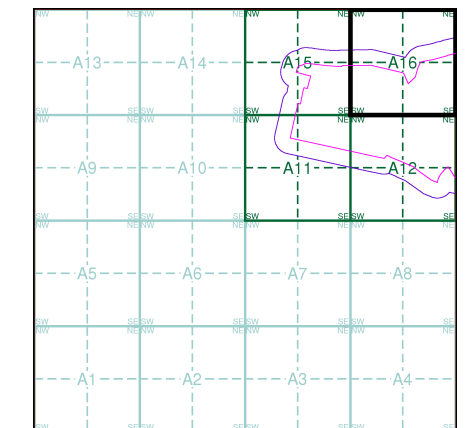
Hazardous Substances

- COMAH Site
- Explosive Site
- NIHHS Site
- Planning Hazardous Substance Consent
- Planning Hazardous Substance Enforcement

Geological

- BGS Recorded Mineral Site

Site Sensitivity Map - Segment A16



Order Details

Order Number: 186667864_1_1
 Customer Ref: 3551_EC,AR,DS
 National Grid Reference: 615950, 315110
 Slice: A
 Site Area (Ha): 79.31
 Plot Buffer (m): 100

Site Details

Marriotts Park, Taverham, Norfolk, NR8 6HL

