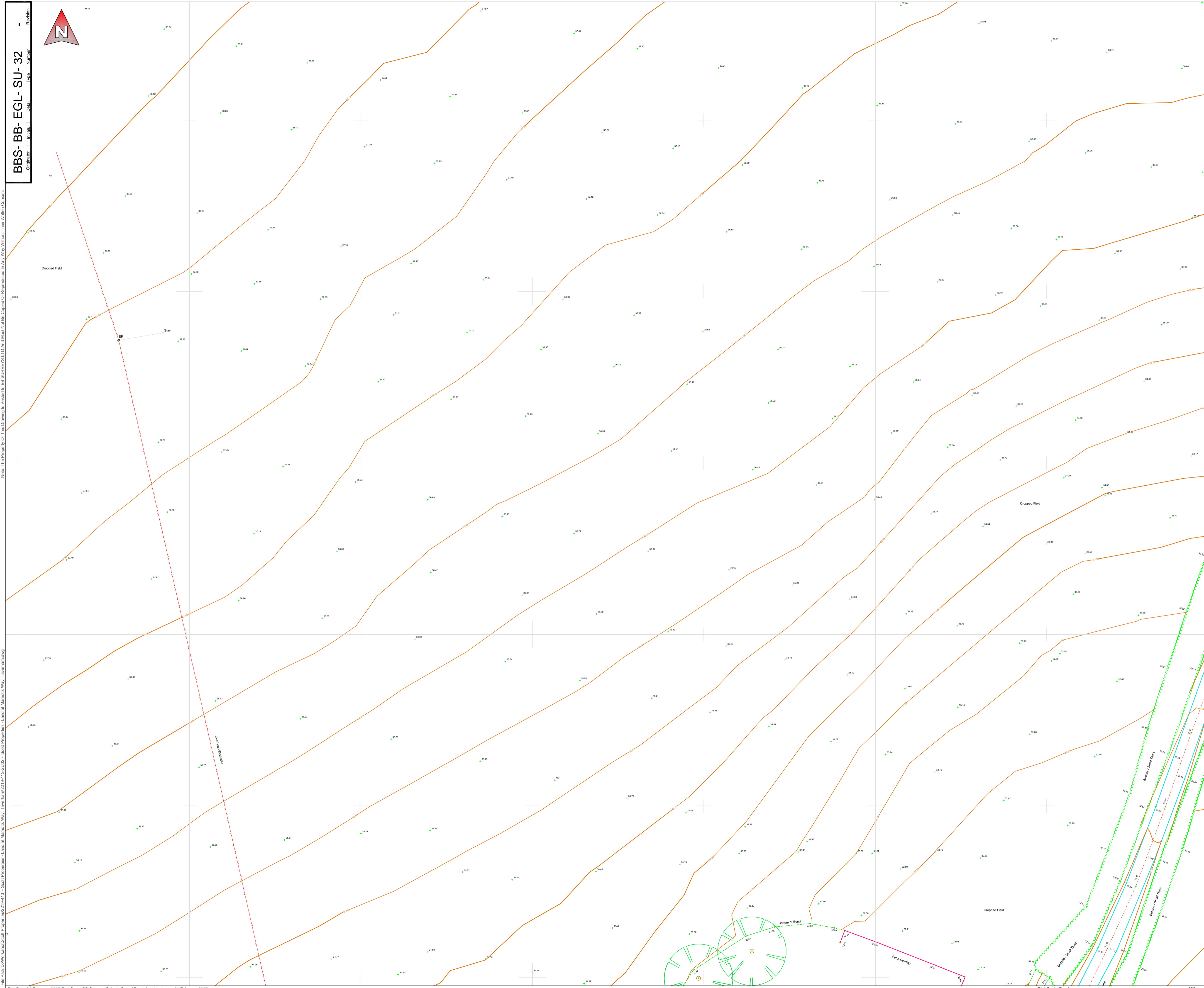


Note: The Property Of This Drawing Is Vested In BB SURVEYS LTD And Must Not Be Copied Or Reproduced In Any Way Without Their Written Consent

File Path: C:\Work\Scot Properties\2219-413\SU02 - Scot Properties - Land at Marriots Way, Taverham.dwg



Notes:

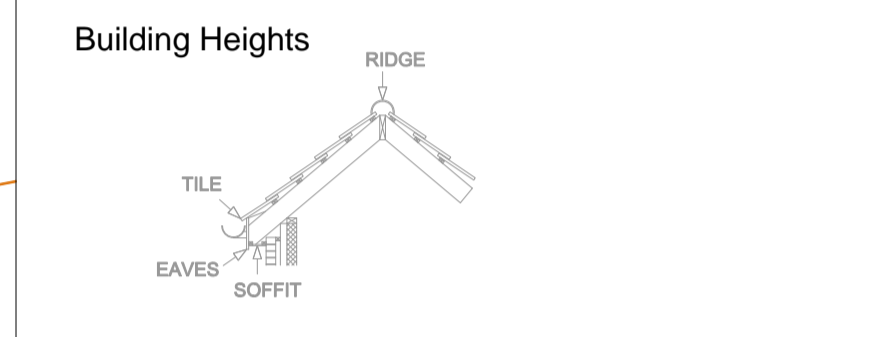
AV	Air Valve	FH	Fire Hydrant	SP	Sign Post
BB	Bottom Bank	FP	Footpath	STAY	Stay
BH	Bore Hole	G	Gully Grate	SV	Sluice Valve
BL	Li Bolard	GV	Gas Valve	TAC	Tactile Paving
BOL	Bolard	H	Hedge	TB	Top Bank
BIN	Bin	IC	Inspection Cover	TBOX	Telephone Box
BS	Bus Stop	IL	Invert Level	TL	Traffic Light
Bushes	Bush	KO	Kerb Outlet	TOK	Top Of Kerb
BT	BT Box	LP	Lamp Post	TP	Telegraph Pole
CAB	Cabinet	MH	Manhole	TRK	Track
CHNL	Channel	MP	Marker Post	TS	Traffic Sign MH
CL	Centreline	NB	Name Board	VENT	Vent
CONC	Concrete	PW	Partition Wall	W	Water Cover
COL	Column	PB	Post Box	WL	White Line
DB	Drop Bottom	PM	Ranking Meter	WO	Wash Out
DCHNL	Drainage Channel	PO	Post	YL	Yellow Line
Door	Door	RE	Rodding Eye		
EEB	Electric MH Cover	RIDGE	Ridge Level		
EP	Electric Pole	RP	Reflector Post		
ER	Earth Road	RS	Road Sign		
ET	EP+Transformer	SETTS	Granite Setts		
Feeder	Feeder Pillar	SF	Safety Fence		

Features

FCB 1.05	Close Boarded	CS	Control Station
W 1.25	Wall	C	Column
H 1.25	Hedge	XXX	Floor to Ceiling Height
OHL	Overhead Line	XXX FC	Floor to False Ceiling Height

Services

0.2250	Foul Sewers	FWS 0.04	Pipe position and alignment is indicative only
0.3750	Storm Sewers	SS 0.04	



SURVEY CARRIED OUT USING TRIMBLE S8 TOTAL STATION & TRIMBLE R10 GPS. ALL SURVEY DATA TO ORDINANCE SURVEY NATIONAL GRID (OSTN15). ALL DIMENSIONS ARE IN METRES UNLESS OTHERWISE STATED. ANY CRITICAL DIMENSIONS AND MEASUREMENTS SHOULD BE BASED ON THE ORIGINAL DIGITAL DATA AND CONFIRMED WITH BB SURVEYS LTD. ANY ERRORS SHOULD BE NOTIFIED TO BB SURVEYS LTD.

NO ATTEMPT HAS BEEN MADE TO ENTER ANY CONFINED SPACES ON THIS SITE. WE HAVE MEASURED INVERT DEPTHS, ESTIMATED PIPE SIZES AND SHOWN THE DIRECTION OF FLOW ONLY WHERE DRAIN RUNS ARE ACTIVE AT THE TIME OF SURVEY. INSPECTION COVERS WHICH WE WERE UNABLE TO LIFT BY MANUAL METHODS ARE DENOTED AS MH (D/L). WE DO NOT QUOTE FOR THE USE OF HYDRAULIC LIFTING EQUIPMENT.

DRAINAGE RUNS BETWEEN INSPECTION COVERS HAVE NOT BEEN INVESTIGATED. ANY SHOWN ARE ESTIMATED AND NOT CONFIRMED. ALL DRAINAGE RUNS SHOULD BE PROVED BY DYE TRACING AND, IF NECESSARY BY RADIO DETECTION METHODS PRIOR TO ANY DESIGN WORK. ALL PIPE SIZES AND CONNECTIONS SHOULD ALSO BE CONFIRMED WITH YOUR LOCAL DRAINAGE AUTHORITY PRIOR TO ANY DESIGN WORK.

THERE MAY BE INSPECTION COVERS ON SITE WHICH WERE NOT VISIBLE AT THE TIME OF SURVEY. THEY MAY HAVE BEEN BURIED OR COVERED BY VEGETATION. YOU SHOULD CONSULT YOUR LOCAL DRAINAGE AUTHORITY OR COMMISSION A CCTV DRAINAGE SURVEY TO ENSURE THAT YOU LOCATE ANY MISSING COVERS OR DRAINAGE RUNS.

REV	Date	Created By	Comments
-	14.02.17	BB	First Issue

Scale at A1: 1:250

Project Number: 2219-413



**1 Chestnut Place, Cringleford
 Norwich, Norfolk NR4 7BD**
 t: 01603 507917
 m: 07786 388175
 e: barry@bbsurveys.co.uk

Client: **Scott Properties
 Graham McCormick**

Project: **Land at Marriots Way,
 Taverham, Norwich**

Title: **Existing Ground Level Survey
 Sheet 31**